

RoHS TEST REPORT

Applicant	Hangzhou Yihan Network Technology Co., Ltd.
Address	Unit 19A07, 18th Floor, T2 Office Tower Runao Business Centre Xiaoshan District, Hangzhou
Manufacturer	Cixi Meiteng Electrical Appliance Co., Ltd.
Address	No. 8, Shangniqiao, Mayan Village, Henghe Town, Cixi City, Zhejiang Province, 315318, China
Sample Name	Garment Steamer
Model	RL-2408
Serial Model	/
Trademark	/
Date of Receipt	Dec.15, 2025
Date of Test	Dec.15, 2025 to Dec.18, 2025
Date of Report	Dec.18, 2025
Test Laboratory	Guangdong KAIXU Testing Technology Co., Ltd.
Test Location	Room 215, Building 2, No. 123, Dongcheng Section, Guanlong Road, Dongcheng Street, Dongguan City, Guangdong Province, China

Test Conclusion:

Test Requested	Conclusion
As specified by client, to determine the Lead(Pb), Cadmium(Cd), Mercury(Hg), Hexavalent chromium(Cr ⁶⁺), Polybrominated Biphenyls(PBBs), Polybrominated Diphenyl Ethers(PBDEs), Dibutyl phthalate (DBP), Butyl benzyl phthalate(BBP), Bis(2-2thylhexyl) phthalate (DEHP) and Diisobutyl phthalate (DIBP) content in the submitted sample(s) in accordance with EU directive 2011/65/EU and revised directive (EU)2015/863 (RoHS2.0) .	PASS

***** FOR FURTHER DETAILS, PLEASE REFER TO THE FOLLOWING PAGE(S) *****

Signed for and on behalf of KAIXU Test International

Tested by: Cathy

Approved by: Martin

Test Method:

1. With reference to IEC 62321-2:2021, review was performed for the samples disjoined from the submitted articles.
2. With reference to IEC 62321-1:2013, tests were performed for the samples indicated by the photos in this report
 - (1) With reference to IEC 62321-3-1:2013, screening by XRF spectroscopy.
 - (2) Wet chemical test method
 - a. With reference to IEC 62321-5:2013, determination of Cadmium by ICP-OES.
 - b. With reference to IEC 62321-5:2013, determination of Lead by ICP-OES.
 - c. With reference to IEC 62321-4:2013+A1:2017, determination of Mercury by ICP-OES.
 - d. With reference to IEC 62321-7-1:2015 & IEC 62321-7-2:2017, determination of Hexavalent chromium by Colorimetric method using UV-Vis.
 - e. With reference to IEC 62321-6:2015, determination of PBBs and PBDEs by GC-MS.
3. With reference to IEC 62321-8: 2017, determination of phthalates by GC-MS.

Test Result:

Item	Results of XRF ⁽¹⁾ (mg/kg)					Results of Wet Chemical Test ⁽²⁾ (mg/kg)						
	Pb	Cd	Hg	Cr	Br	Cr ⁶⁺	PBBs	PBDEs	DBP	BBP	DEHP	DIBP
Limit	1000	100	1000	1000	1000	1000	1000	1000	1000	1000	1000	1000
No.												
1	BL	BL	BL	BL	BL	N.D.	N.D.	N.D.	N.D.	N.D.	N.D.	N.D.
2	BL	BL	BL	BL	BL	N.D.	N.D.	N.D.	N.D.	N.D.	N.D.	N.D.
3	BL	BL	BL	BL	BL	N.D.	N.D.	N.D.	N.D.	N.D.	N.D.	N.D.
4	BL	BL	BL	BL	BL	N.D.	N.D.	N.D.	N.D.	N.D.	N.D.	N.D.
5	BL	BL	BL	BL	BL	N.D.	N.D.	N.D.	N.D.	N.D.	N.D.	N.D.
6	BL	BL	BL	BL	BL	N.D.	N.D.	N.D.	N.D.	N.D.	N.D.	N.D.
7	BL	BL	BL	BL	BL	N.D.	N.D.	N.D.	N.D.	N.D.	N.D.	N.D.
8	BL	BL	BL	BL	BL	N.D.	N.D.	N.D.	N.D.	N.D.	N.D.	N.D.
9	BL	BL	BL	BL	BL	N.D.	N.D.	N.D.	N.D.	N.D.	N.D.	N.D.
10	BL	BL	BL	BL	--	--	--	--	--	--	--	--
11	BL	BL	BL	BL	BL	N.D.	N.D.	N.D.	N.D.	N.D.	N.D.	N.D.
12	BL	BL	BL	BL	--	--	--	--	--	--	--	--
13	BL	BL	BL	BL	--	--	--	--	--	--	--	--
14	BL	BL	BL	BL	BL	N.D.	N.D.	N.D.	N.D.	N.D.	N.D.	N.D.
15	BL	BL	BL	BL	--	--	--	--	--	--	--	--
16	BL	BL	BL	BL	BL	N.D.	N.D.	N.D.	N.D.	N.D.	N.D.	N.D.
17	BL	BL	BL	BL	BL	N.D.	N.D.	N.D.	N.D.	N.D.	N.D.	N.D.
18	BL	BL	BL	BL	BL	N.D.	N.D.	N.D.	N.D.	N.D.	N.D.	N.D.
19	BL	BL	BL	BL	BL	N.D.	N.D.	N.D.	N.D.	N.D.	N.D.	N.D.

This test report is limited to the above client company and the product model only. The results shown in this Test Report refer only to the sample(s) tested unless otherwise stated and such sample(s) are retained for 30 days only. It may not be duplicated without prior written consent of Guangdong KAI XU Testing Technology Co., Ltd.

Item	Results of XRF ⁽¹⁾ (mg/kg)					Results of Wet Chemical Test ⁽²⁾ (mg/kg)						
	Pb	Cd	Hg	Cr	Br	Cr ⁶⁺	PBBs	PBDEs	DBP	BBP	DEHP	DIBP
Limit	1000	100	1000	1000	1000	1000	1000	1000	1000	1000	1000	1000
No.												
20	BL	BL	BL	BL	BL	N.D.	N.D.	N.D.	N.D.	N.D.	N.D.	N.D.
21	BL	BL	BL	BL	BL	N.D.	N.D.	N.D.	N.D.	N.D.	N.D.	N.D.
22	BL	BL	BL	BL	BL	N.D.	N.D.	N.D.	N.D.	N.D.	N.D.	N.D.
23	BL	BL	BL	BL	BL	N.D.	N.D.	N.D.	N.D.	N.D.	N.D.	N.D.
24	BL	BL	BL	BL	BL	N.D.	N.D.	N.D.	N.D.	N.D.	N.D.	N.D.
25	BL	BL	BL	BL	--	--	--	--	--	--	--	--
26	BL	BL	BL	BL	--	--	--	--	--	--	--	--
27	BL	BL	BL	BL	BL	N.D.	N.D.	N.D.	N.D.	N.D.	N.D.	N.D.
28	BL	BL	BL	BL	BL	N.D.	N.D.	N.D.	N.D.	N.D.	N.D.	N.D.
29	BL	BL	BL	BL	--	--	--	--	--	--	--	--
30	BL	BL	BL	BL	BL	N.D.	N.D.	N.D.	N.D.	N.D.	N.D.	N.D.
31	BL	BL	BL	BL	--	--	--	--	--	--	--	--
32	BL	BL	BL	BL	--	--	--	--	--	--	--	--
33	BL	BL	BL	BL	--	--	--	--	--	--	--	--
34	BL	BL	BL	BL	--	--	--	--	--	--	--	--
35	BL	BL	BL	BL	BL	N.D.	N.D.	N.D.	N.D.	N.D.	N.D.	N.D.
36	BL	BL	BL	BL	BL	N.D.	N.D.	N.D.	N.D.	N.D.	N.D.	N.D.
37	BL	BL	BL	BL	--	--	--	--	--	--	--	--

This test report is limited to the above client company and the product model only. The results shown in this Test Report refer only to the sample(s) tested unless otherwise stated and such sample(s) are retained for 30 days only. It may not be duplicated without prior written consent of Guangdong KAI XU Testing Technology Co., Ltd.

Remark:

(1)

Pb=Lead,
 Cd=Cadmium,
 Hg=Mercury,
 Cr=Chromium,
 Br=Bromine,
 PBBs=Polybrominated biphenyls,
 PBDEs=Polybrominated diphenyl ethers.

(2)

(a) It is the result on total Br while test item on restricted substances is PBBs/PBDEs. It is the result on total Cr while test item on restricted substances is Cr6+.

(b) Results are obtained by XRF for primary screening, and further chemical testing by ICP-OES (for Cd, Pb,Hg), UV-Vis (for Cr(VI)) and GC-MS (for PBBs, PBDEs) is recommended to be performed, if the concentration exceeds the below warning value according to IEC62321-3-1:2013(unit: mg/kg).

Element	Unit	Non-metal	Metal	Composite Material
Cd	mg/kg	BL≤70-3σ< X <130+3σ≤OL	BL≤70-3σ< X <130+3σ≤OL	BL≤50-3σ< X <150+3σ≤OL
Pb	mg/kg	BL≤700-3σ< X <1300+3σ≤OL	BL≤700-3σ< X <1300+3σ≤ OL	BL≤500-3σ< X <1500+3σ≤OL
Hg	mg/kg	BL≤700-3σ< X <1300+3σ≤OL	BL≤700-3σ< X <1300+3σ≤OL	BL≤500-3σ< X <1500+3σ≤OL
Cr	mg/kg	BL≤700-3σ< X	BL≤700-3σ< X	BL≤500-3σ< X
Br	mg/kg	BL≤300-3σ< X	--	BL≤250-3σ< X

(c) OL=Over Limit, BL=Below Limit, X=inconclusive, LOD=Limit of Detection, NA=not applicable

(d) The XRF screening test for RoHS elements-The reading may be different to the actual content in the sample be of non-uniformity composition

(3)

(a) mg/kg=ppm=0.0001%, N.D.=not detected(<MDL), NEG= Negative

(b) Unit and Method Detection Limit (MDL) in wet chemical test

Test Items	Pb	Hg	Cd	PBBs	PBDEs	DBP	BBP	DEHP	DIBP
Unit	mg/kg	mg/kg	mg/kg	mg/kg	mg/kg	mg/kg	mg/kg	mg/kg	mg/kg
MDL	10	10	10	50	50	50	50	50	50

The MDL for single compound of PBBs &PBDEs is 50mg/kg, MDL of Cr⁶⁺ for metal sample is 0.10µg/cm² and MDL of Cr⁶⁺ for polymer & composite sample is 8mg/kg.

(c) Metal sample:

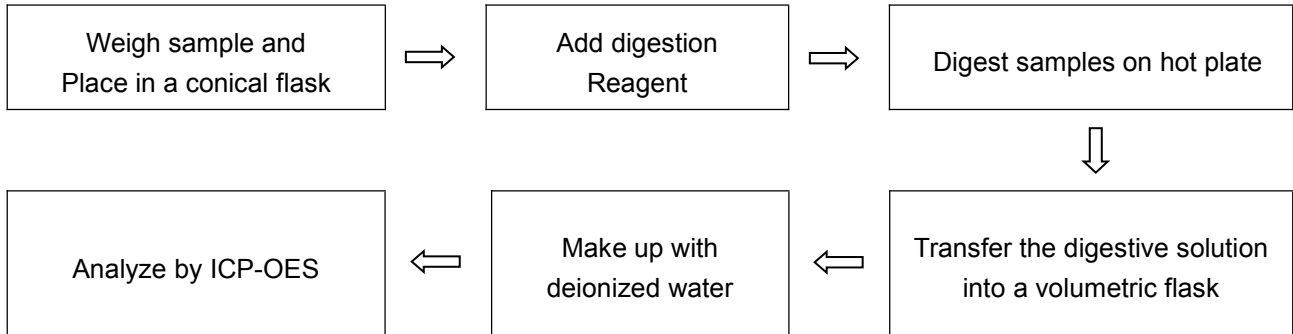
	CrVI concentration	Conclusion
1	> 0.13 µg/cm ²	Positive
2	< 0.10 µg/cm ²	Negative
3	0.10 µg/cm ² ~ 0.13 µg/cm ²	Inconclusive

unavoidable coating variations may influence the determination

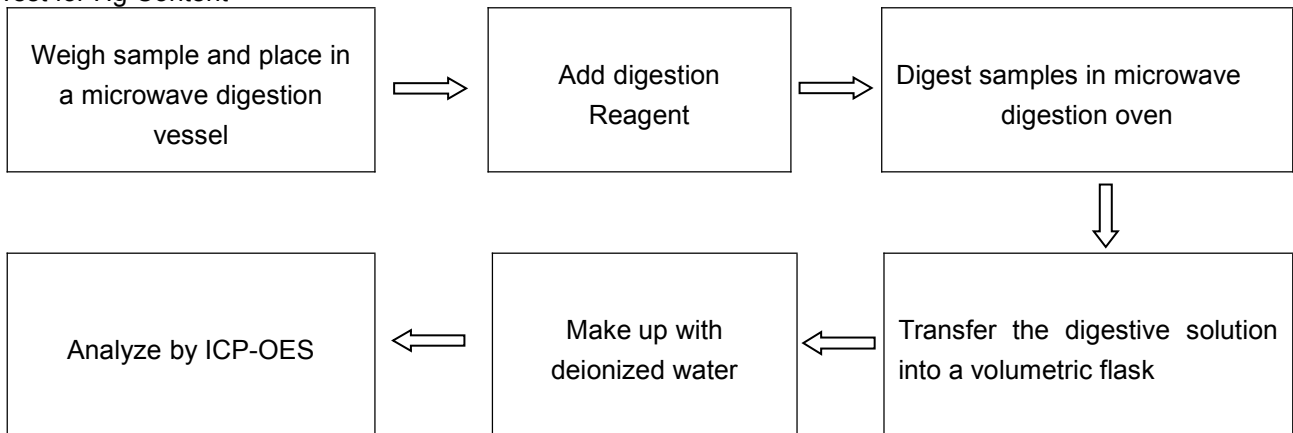
Information on storage conditions and production date of the tested sample is unavailable and thus Cr⁶⁺ results represent status of the sample at the time of testing.

Appendix I**Test Process:**

1. Test for Cd/Pb Content

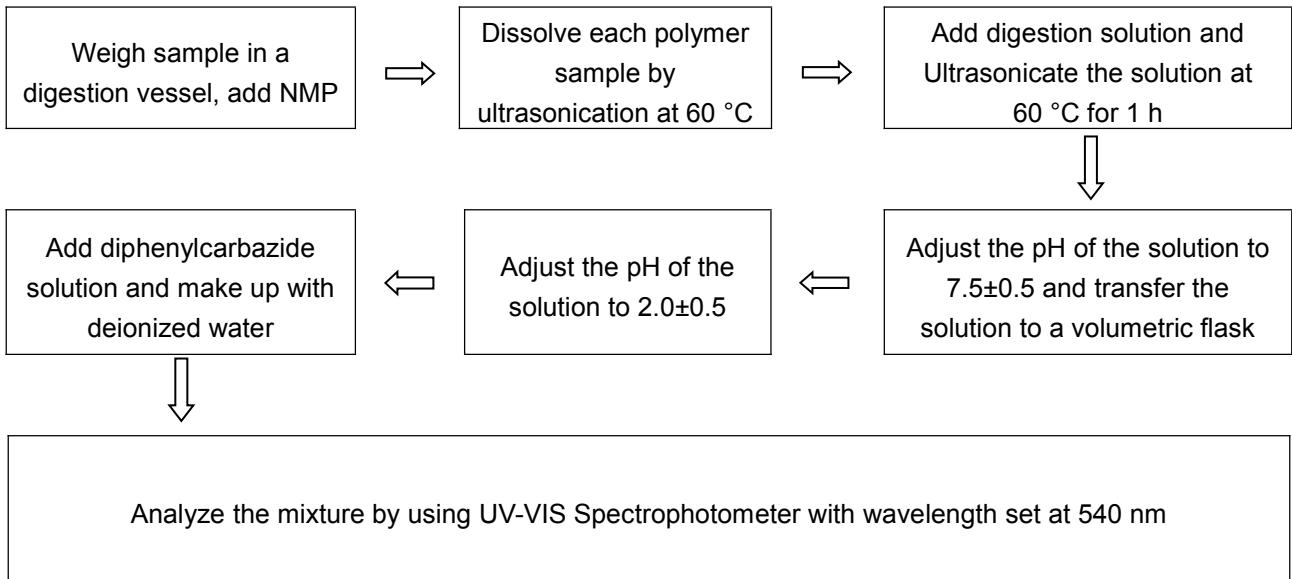


2. Test for Hg Content

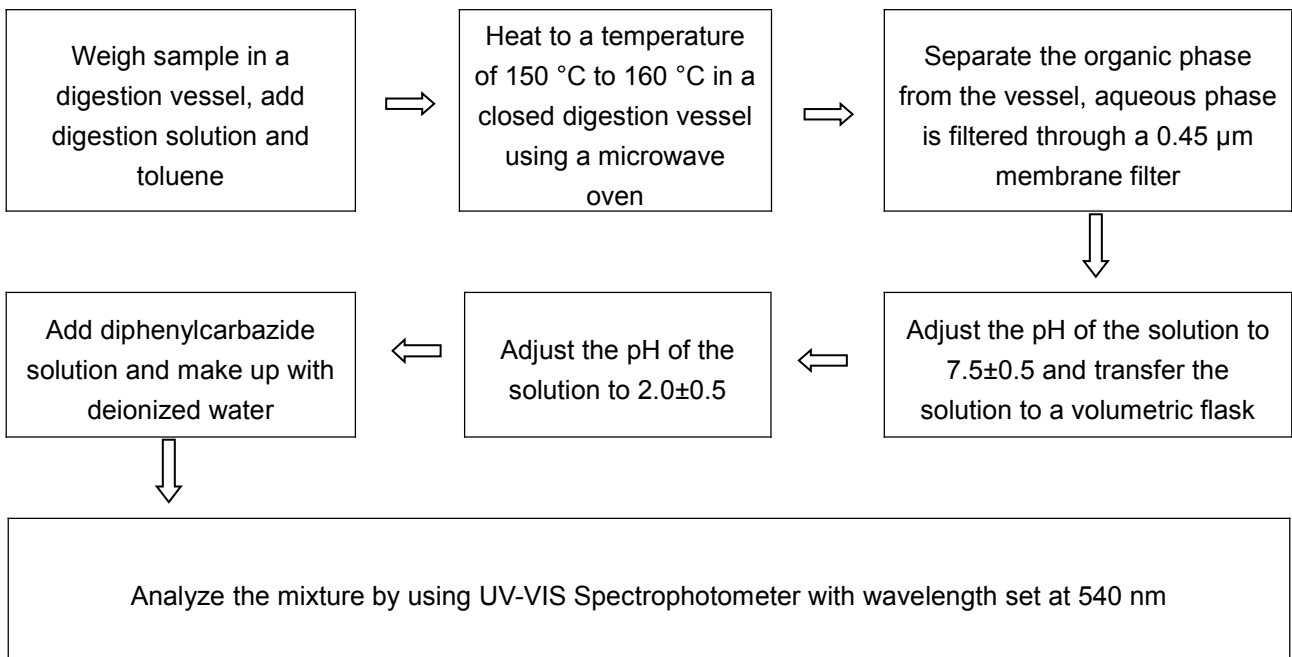


3. Test for Chromium (VI) Content

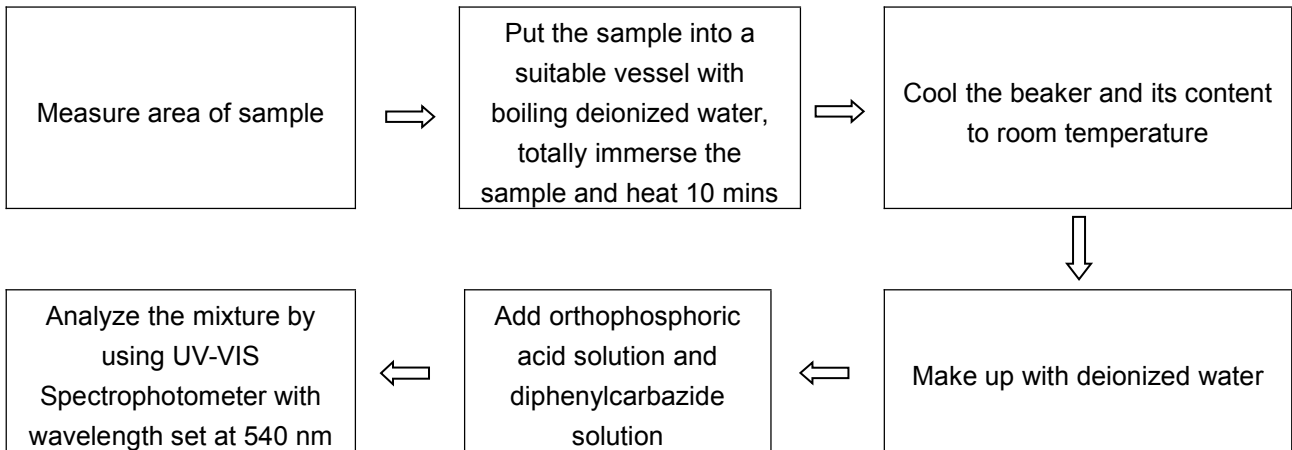
Soluble polymers:



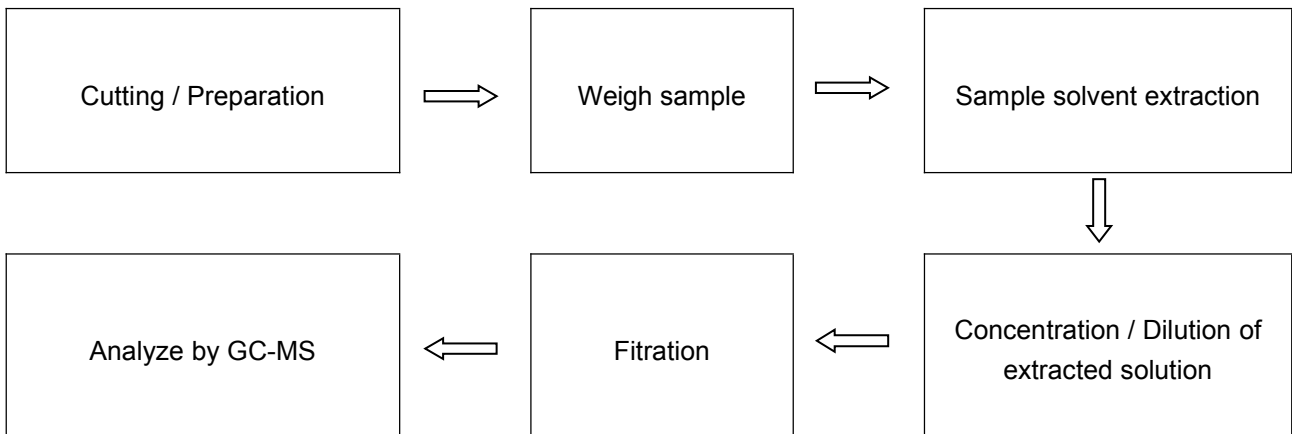
Insoluble/unknown polymers and electronics without Sb



Metal material



4. Test for DBP, BBP, DEHP, DIBP, PBBs, PBDEs Content



Sample Description:

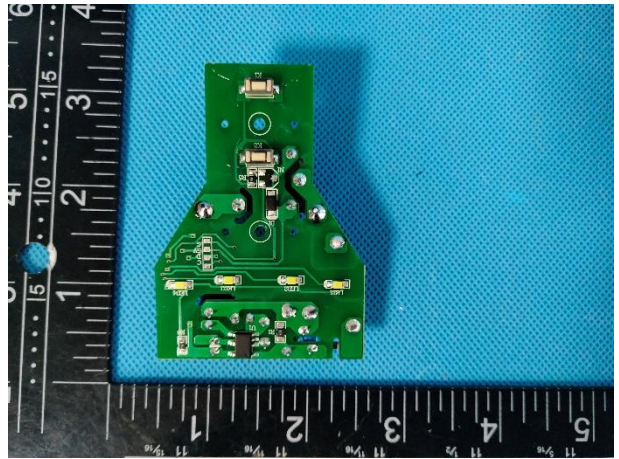
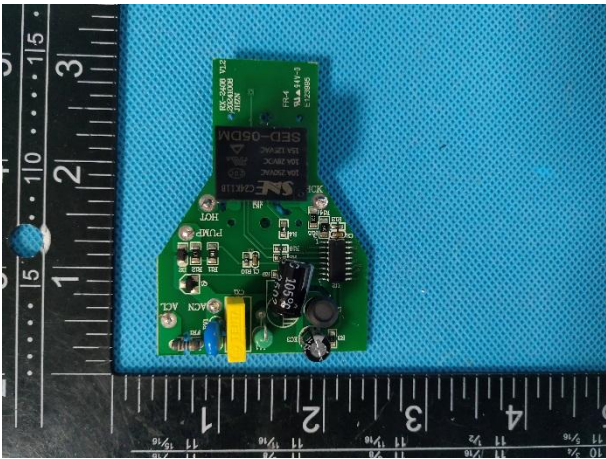
Material No.	Description
1	Black plastic casing
2	Grey plastic button
3	Grey plastic round head
4	Grey plastic brush
5	Black transparent plastic kettle
6	Black plastic kettle bottom shell
7	Grey rubber kettle lid
8	Light blue plastic inner shell
9	White plastic bottom shell
10	Silver metal steam pump
11	White rubber sleeve
12	Silver metal thermostat
13	Silver metal electromagnetic pump casing
14	White plastic connector
15	Silver metal screw
16	White nylon thread leather cover
17	Blue nylon thread leather cover
18	Yellow nylon thread leather cover
19	Red nylon thread leather cover
20	White plastic wire cover
21	Yellow green plastic wire cover
22	Brown plastic wire cover
23	Blue plastic wire cover
24	Black plastic heat shrink tubing
25	Copper colored metal wire core
26	Silver metal connection buckle
27	Grey plastic wire cover
28	White plastic wire core connector sleeve
29	Grey blue charger plug
30	PCB
31	Resistance
32	Capacitance
33	Diode

This test report is limited to the above client company and the product model only. The results shown in this Test Report refer only to the sample(s) tested unless otherwise stated and such sample(s) are retained for 30 days only. It may not be duplicated without prior written consent of Guangdong KAIXU Testing Technology Co., Ltd.

Material No.	Description
34	transistor
35	IC
36	Push switch
37	Relay

Tested sample photos





-----THE END OF REPORT-----